

Series to Multiple Isolation Transformer

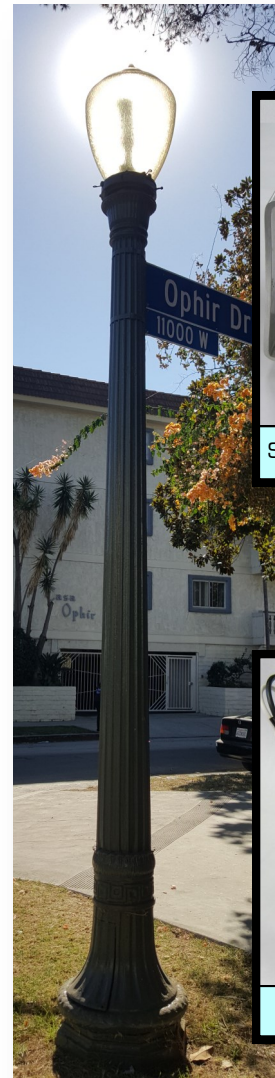
US Pats. 9,554,444
10,260,721

Regulator Tested



PROUDLY ASSEMBLED IN
Everett, Washington, USA

- Constant current input; primary leads insulated to 7.5kV
- 120V (60Hz) nominal isolated secondary
- Flexible capacity—from 40W to 400W maximum high power factor load—single transformer can handle multiple loads
- Epoxy encapsulated; dust tight and weatherproof, may be direct buried in ground
- Built for the long haul—durable components and precision design offer cooler operation, longer life
- Operates most lighting technology, ranging from 120V incandescent to the highest efficiency LED
- Allows conversion on a pole-by-pole basis
- Isolated secondary output
- Compact design for discreet use in pole base, pull box or mounted to the pole
- Allows use of photocells or line-voltage controls
- Loop loading calculations available. Several loading factor options to facilitate proper regulator loading.
- Custom-designed units available upon request
- Regulator Tested. Each STM design is verified on an actual moving coil Regulator in the lab prior to release.
- OV20 Systems transformer products feature a limited 5 year warranty. Consult factory for details.

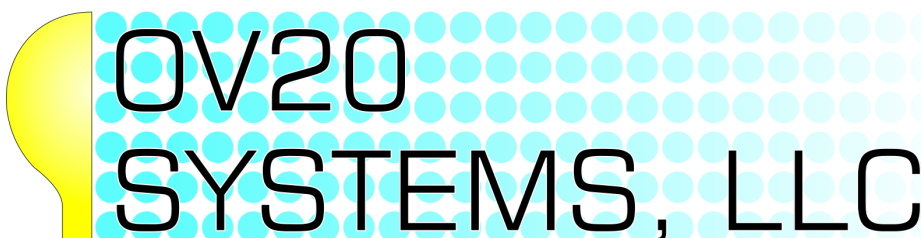


STM-140-AL-SMA



STM-140-WL

OV20 Systems Series to multiple Isolation Transformer will allow you to convert your series lighting systems to line voltage on a pole-by-pole basis. Costly conversions can be postponed indefinitely. No longer are you beholden to your remaining stock of specialized incandescent lamps, nor reliant upon a single ballast manufacturer. With OV20 Systems STM Transformers, you can upgrade to the latest long-life, energy efficient technology. Contact us today to find out how to extend the life of your system.



Series to Multiple Isolation Transformer

US Pats. 9,554,444
10,260,721

Regulator Tested



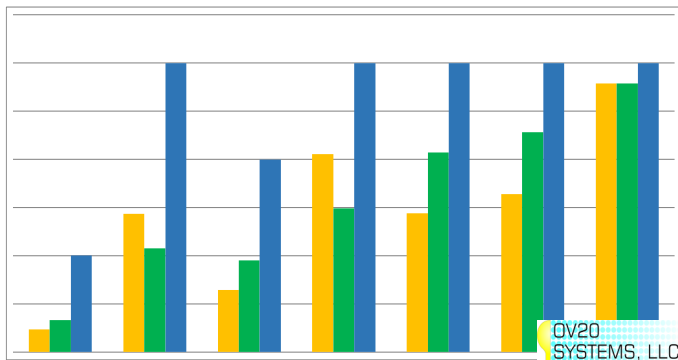
PROUDLY ASSEMBLED IN
Everett, Washington, USA

Satisfying customer needs since 2012

Circuit Loading Calculation

It's imperative that your circuits be properly loaded to avoid overload and improve the efficiency of your regulator. Loading factors are provided as a guideline. Simply add up the loading factors of all the devices on your circuit and compare with the regulator size in kW. Optimally, a regulator should be loaded close to 100%.

Loading factors are calculated from reactive power and do not reflect the actual energy consumption. Contact us for more detail. We can create a custom loading plan to help you determine the correct mix of transformers to optimally load your regulator.



System Protection: ACSD



We worked in close concert with our customers to design the **ACSD**—

Automated Circuit Shutdown Device. It monitors the series circuit for Overcurrent, Undercurrent or an Arc.

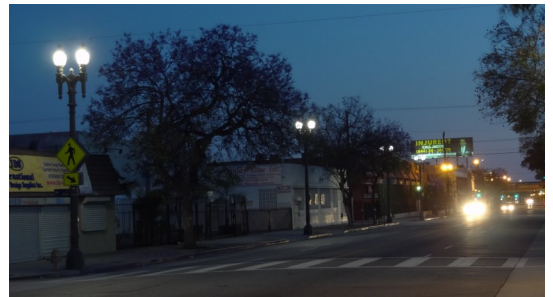
If a disturbance is greater than the threshold set by the ACSD, it will disconnect power from the series circuit and illuminate a trouble indicator light on the unit, locking out the circuit.

The ACSD can help preserve your systems by reducing damage from arcing lines, and it improves safety by disconnecting power in the event of an open circuit or arc. See our website for more detail on the benefits of the ACSD and the ACSD Reader.

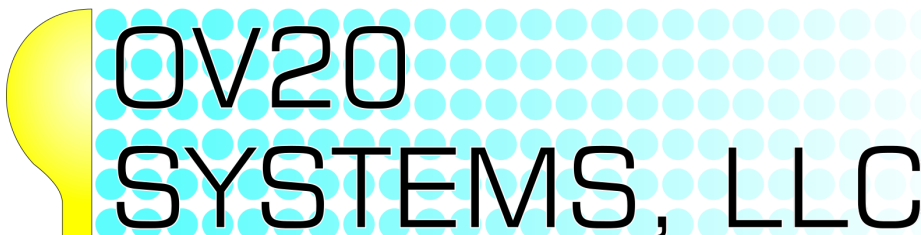


Upgrading Makes Sense Today.

Ready to deploy LED technology? You can include your series circuits! OV20 Systems transformers with STM technology are designed to make upgrades quick and easy. Just add an STM transformer, then connect your new light source to the line voltage output. It's an easy and cost-effective way to upgrade series circuits to LED.



Need A Custom Solution for your situation? Drop us a line.



OV20 Systems, LLC
PO BOX 281
Monroe, WA 98272
(360) 863-1999

<http://www.ov20systems.com>

Series to Multiple Isolation Transformer

US Pats. 9,554,444
10,260,721

Regulator Tested



PROUDLY ASSEMBLED IN
Everett, Washington, USA

Ordering Example: **STM-6.6A-120M-110W-WLS**

Product Code	Primary Amps	Secondary Volts (load capacity nominal +/- 10%)	Maximum Load*/ System Loading Factor	Enclosure Types Available (See pg. 4)
6.6A primary; 120V secondary (nominal +/- 10%)*				
(STM) Series To Multiple transformer, 60Hz	(6.6A) 6.6 Amp	(120G) up to 400W HPF	(400W) LED 400W Max 1.06kW Loading Factor	(WLL) (ALL-SMA)
		(120X) up to 250W HPF	(250W) LED 250W Max 0.65kW Loading Factor	(WL) (AL-SMA)
		(120H) up to 200W HPF	(200W) LED 200W Max/ 0.47kW Loading Factor	(WL) (AL-SMA)
		(120L) up to 175W HPF	(175W) LED 175W Max/ 0.41kW Loading Factor	(WL) (AL-SMA)
		(120M) up to 110W HPF	(110W) LED 110 Max/ 0.3kW Loading Factor	(WLS) (AL-SMA)
		(120U) up to 75W HPF	(75W) LED 75W Max/ 0.26kW Loading Factor	(WLS) (AL-SMA)
		(120C) up to 60W HPF	(60W) LED 60W Max/ 0.21kW Loading Factor	(WLS) (AL-SMA)
		(120P) up to 40W HPF	(40W) LED 40W Max/ 0.12kW Loading Factor	(WLS) (AL-SMA)
		(120E) 150W HPS HPF CWA ballast	(150HPS) runs 120v 150W HPS 0.47kW 0.47kW Loading Factor	(WLL) (ALL-SMA)
		(120B) 100W HPS HPF CWA ballast	(100HPS) runs 120v 150W HPS ballast 0.47kW Loading Factor	(WL) (AL-SMA)

*Based on 6.6A primary and 20% or greater overall circuit loading. Secondary voltage observed in the field may vary slightly, depending on conditions.

See next page for 20A product and transformer options

Need 50Hz? 7.5A or 9.6A? Contact us for details. We will gladly design a custom solution for you.

Series to Multiple Isolation Transformer

US Pats. 9,554,444
10,260,721

Regulator Tested



PROUDLY ASSEMBLED IN
Everett, Washington, USA

Ordering Example: **STM-20A-120H-200W-WL**

Product Code	Primary Amps	Secondary Volts (load capacity nominal +/- 10%)	Maximum Load*/ System Loading Factor	Enclosure Types Available
20A primary; 120V secondary (nominal +/- 10%)*				
(STM) Series To Multiple transformer, (60Hz)	(20A) 20 Amp	(120H) up to 200W HPF	(200W) LED 200W Max 0.48kW Loading Factor	(WL) (AL-SMA)

Options (add as suffix to part number)

(PL_)

Primary Leads. Standard is 2 ft. (specify custom length in feet)

(SL_)

Secondary Leads. Standard is 2 ft. (specify custom length in feet)

(SO)

Secondary output cable 10/3 SO Cable (includes GND)

(UF)

Secondary output cable 10/3 Underground Feed (includes GND)

(GND)

Ground lead, bonded to transformer core. Automatically included when SO or UF option is selected.

(AL/ALL-SMA)

Aluminum enclosure with Pole/Crossarm Mounting Adaptor. (pole mounting hardware not included.) All aluminum enclosures include a case ground via a separate wire. When GND, SO or UF option is selected, case is bonded to core, using the SO/UF ground wire. **Connection to ground is required for all aluminum enclosures.**

(HV_)

High voltage primary wire for 6.6A regulators over 40kW—Specify regulator kW size.

*Based on 20A primary and 20% or greater overall circuit loading. Secondary voltage observed in the field may vary slightly, depending on conditions.

Need 50Hz? 7.5A or 9.6A? Contact us for details. We will gladly design a custom solution for you.

- Innovative design; patented under US Patent numbers 9,554,444 and 10,260,721
- 24" Primary and secondary leads standard
- Primary: #8 stranded copper, 7.5kV insulated, Weatherproof, oil & water resistant
- Secondary: #10 stranded copper 600V insulated, Weatherproof, oil & water resistant
- +/-10% of rated voltage for HPF secondary loads
- Optional side mounting adaptor for aluminum enclosure, for mounting to pole or crossarm

Enclosure	A	B	C	Max Weight
WLS	3 3/4"	4"	2 3/4"	5 lbs
WL	5 1/2"	4"	2 3/4"	8 lbs
WLL	7"	6"	5"	18 lbs
AL	5 3/4"	4 1/8"	3"	10 lbs
ALL	7"	5"	4 1/4"	15 lbs